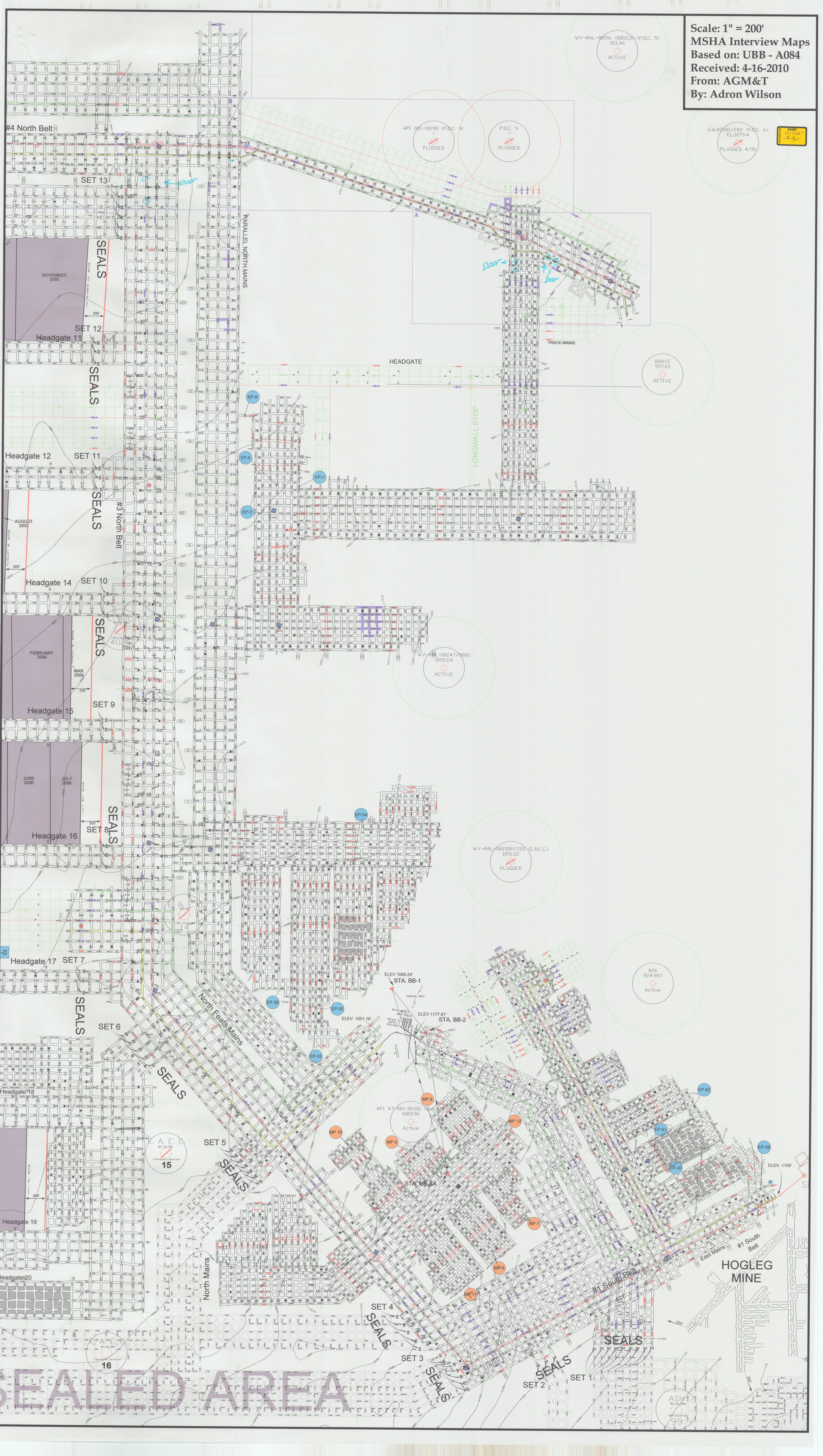


Scale: 1" = 200'  
MSHA Interview Maps  
Based on: UBB - A084  
Received: 4-16-2010  
From: AGM&T  
By: Adron Wilson



WV-RAL-00196 (800113) (P.D.C. 5)  
921.46  
ACTIVE

API 021-00198 (P.D.C. 9c)  
PLUGGED

P.D.C. 9  
PLUGGED

G.W.47081/242 (P.D.C. 6)  
EL.1079.4  
PLUGGED 4/91

800115  
957.03  
ACTIVE

WV-RAL-00247/9080  
1092.64  
ACTIVE

WV-RAL-00035P/7720 (E.A.E.C.)  
1051.22  
PLUGGED

426  
924.987  
Active

A.E.C.  
P.I. 83.900  
15  
Current Location

API 47-081-00381  
1089.96  
Active

A.E.C.  
P.I. 83.900  
16  
Current Location

ASH  
API 21.000  
99

SEALED AREA